



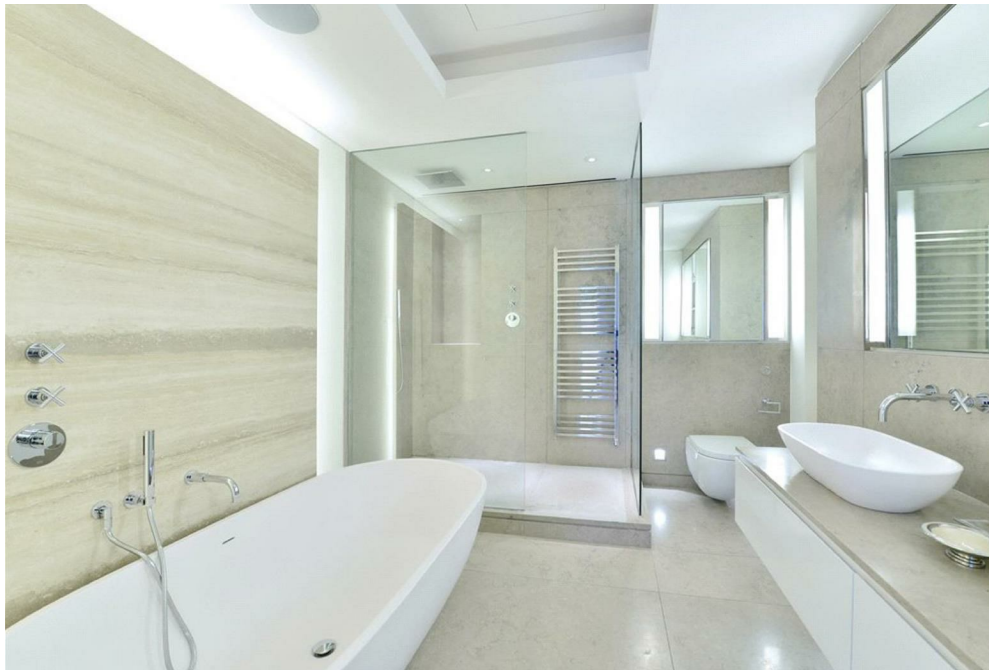
65, Duke Street,  
, W1K

£6,200 Per Week,

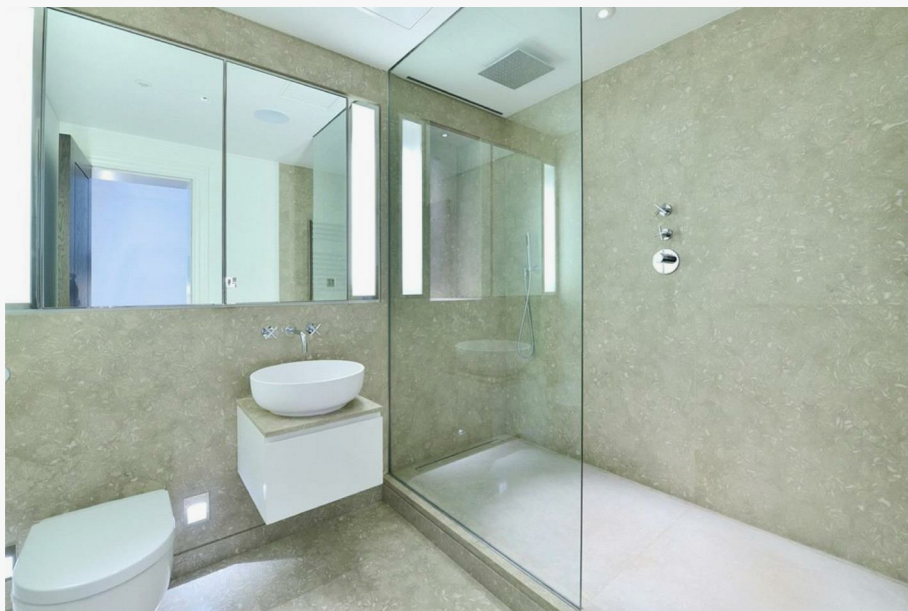
NAPIER WATT

T: 0207 935 0011  
E: [enquiries@napierwatt.co.uk](mailto:enquiries@napierwatt.co.uk)  
W: [napierwatt.co.uk](http://napierwatt.co.uk)

35 Berkeley Square, Mayfair, London, W1J 5BF







## Description

A superb three bedroom apartment which has been refurbished to the highest specification whilst maintaining its traditional features such as high ceilings throughout, bay windows, cornicing & fireplaces.

The apartment comprises a grand reception room which is generously proportioned offering elegant living and entertaining space, a spacious well equipped kitchen/dining room with a breakfast bar, two bedrooms with en-suite bathrooms both leading onto private balconies, master bedroom with a dressing room and en-suite bathroom, utility room with ample storage and a guest cloakroom.

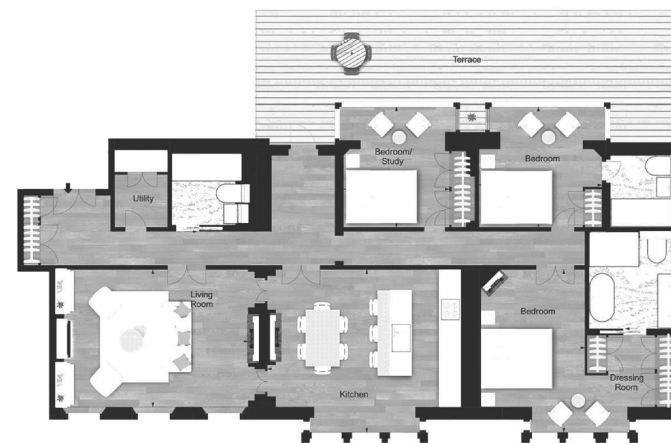
Further benefits include on-site concierge, comfort cooling, lift service, a storage cupboard with each apartment located on the lower ground floor and an emergency out of hours service.

Mayfair allows easy access to the rest of London. Nearby underground stations include Bond Street (Central and Jubilee lines), Marble Arch (Central Line), Green Park (Jubilee, Piccadilly and Victoria lines) and a number of regular and varied bus services further improve

## Key Features

## Terms

Fees & Charges: Tenancies exceeding £100,000 Per annum £480 inc VAT, Tenancies where a company is a tenant £480 Inc VAT.



FIRST FLOOR

APPROX. GROSS INTERNAL AREA\*  
2419 Ft<sup>2</sup> - 224.73 M<sup>2</sup>

IMPORTANT: We would inform prospective purchasers that these sales particulars have been prepared as a general guide only. A detailed survey has not been carried out, nor the services, appliances and fittings tested. Room sizes should not be relied upon for furnishing purposes and are approximate. If floor plans are included, they are for guidance only and illustration purposes only and may not be to scale. If there are any important matters likely to affect your decision to buy, please contact us before viewing the property.